



HYDRAULICKÉ SCHÉMY  
ZAPOJENÍ KOTLOV NA BIOMASU  
ATTACK®



*Variety zapojenia  
kotlov na biomasu:*

*ATTACK® WOOD&PELLET*

*ATTACK® PELLET*

*ATTACK® SLX*

*ATTACK® DPX*

*ATTACK® DP*

*ATTACK® FD Automat*



[WWW.ATTACK.SK](http://WWW.ATTACK.SK)

## LEGENDA



Kotel rady:  
DP  
DPX  
SLX  
PELLET  
WOOD & PELLET



Kotel rady:  
FDA



Kotel rady:  
PELLET



Automatický kotel



Akumulačná nádrž AK



Akumulačná nádrž AS



Akumulačná nádrž HR



Akumulačná nádrž HRS

## OBSAH

LEGENDA .....	2 – 3
ATTACK-OVENTROP, ATTACK-LADDOMAT .....	4
ATTACK AK .....	5 – 7
ATTACK AS .....	8
ATTACK AK BIVALENT .....	9
ATTACK AK 2x .....	10
ATTACK HR .....	11

LEGENDA



Akumulačná nádrž TUV



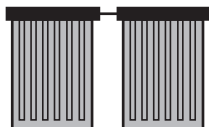
Akumulačná nádrž TUVS



Nádrž na TUV



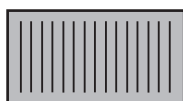
Bivalentná nádrž na TUV



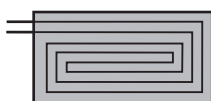
Solárne panely



Expanzná nádrž



Radiátorový vykurovací okruh



Podlahový vykurovací okruh

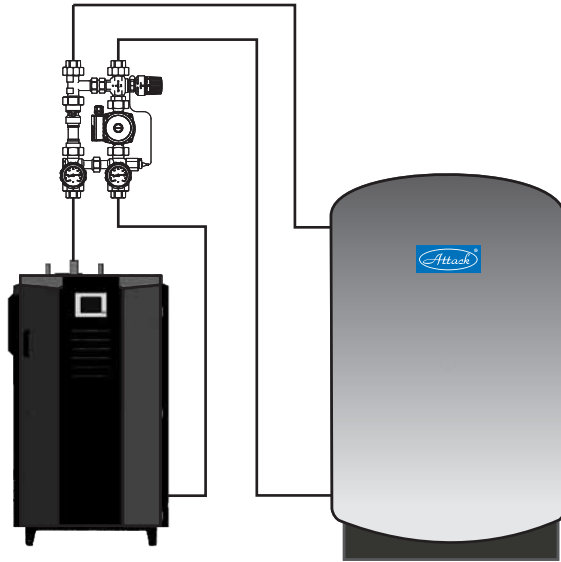


Anuloid

ATTACK HRS .....	12
ATTACK HRS + ATTACK AK .....	13
ATTACK TUV .....	14
ATTACK TUVS .....	15
ATTACK FD Automat + ATTACK AK .....	16
ATTACK FD Automat + ATTACK AS .....	17
ATTACK FD Automat .....	18 – 20
ATTACK PELLET 30 AUTOMATIC Plus .....	21 – 23

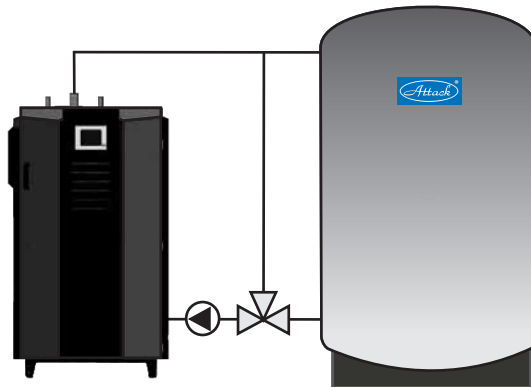
---

## ATTACK-OVENTROP

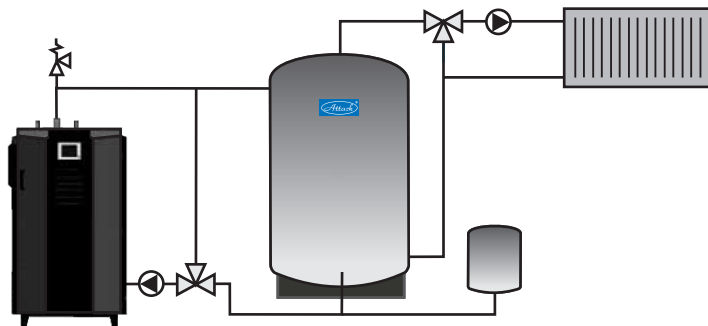


---

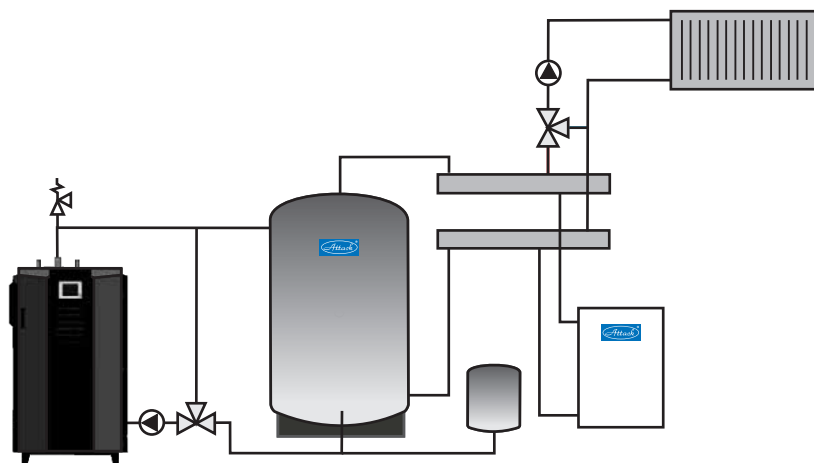
## ATTACK-LADDOMAT



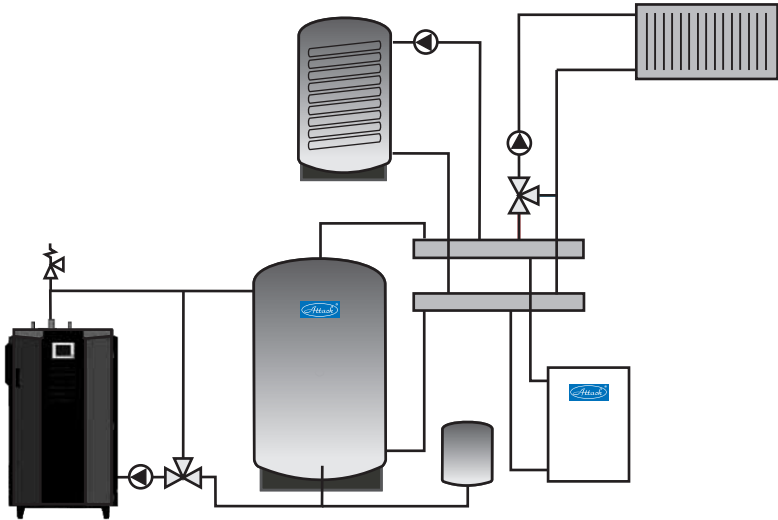
## 1. ATTACK AK



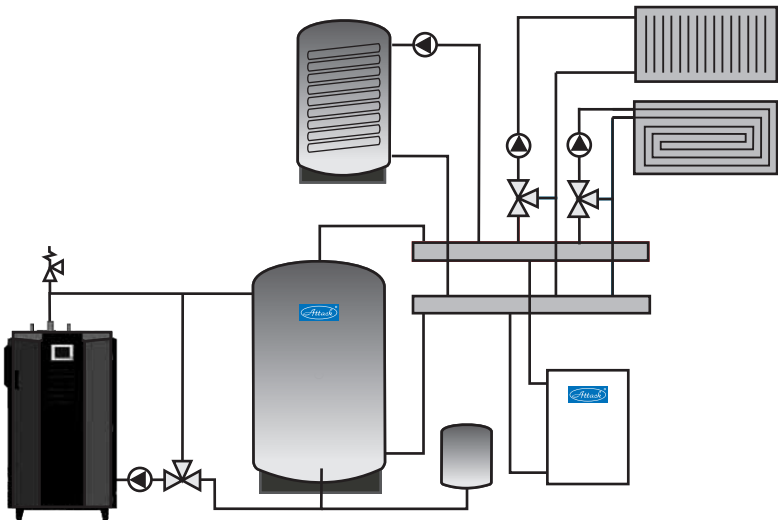
## 2. ATTACK AK



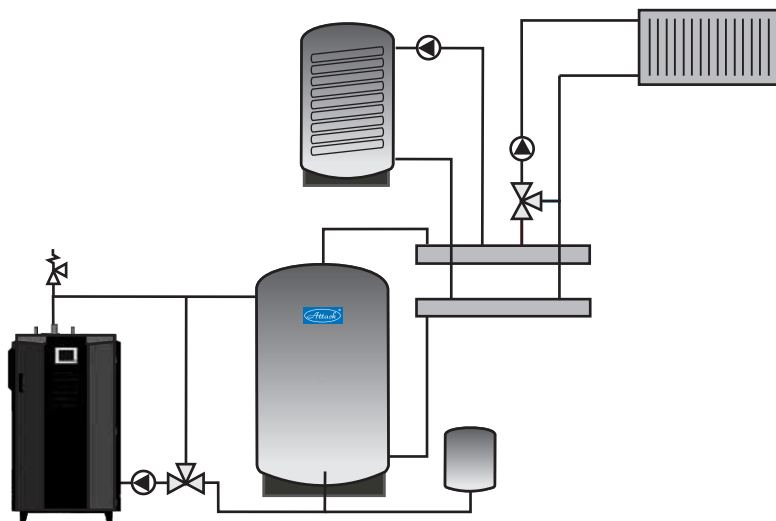
### 3. ATTACK AK



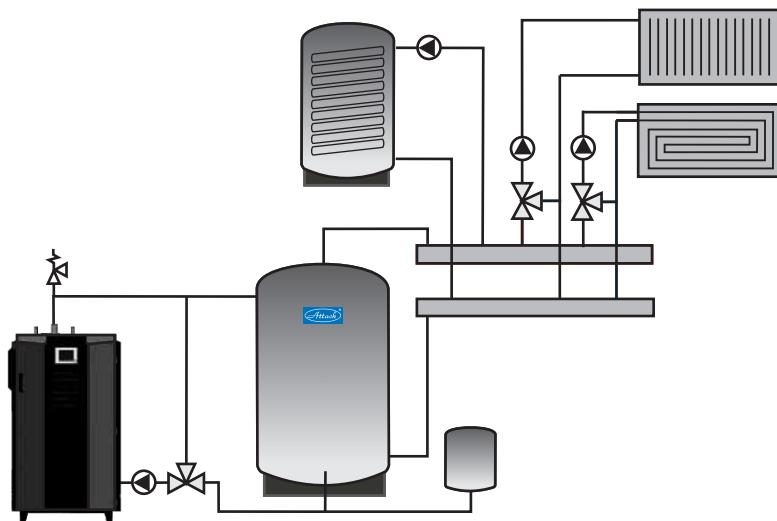
### 4. ATTACK AK



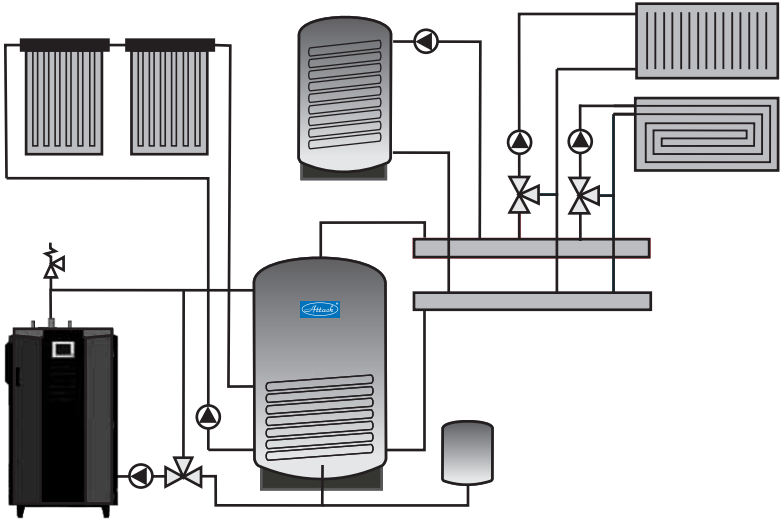
## 5. ATTACK AK



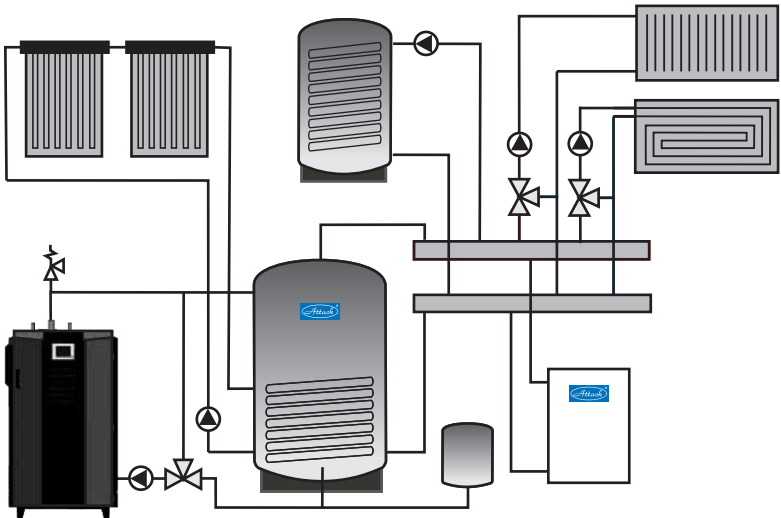
## 6. ATTACK AK



## 7. ATTACK AS

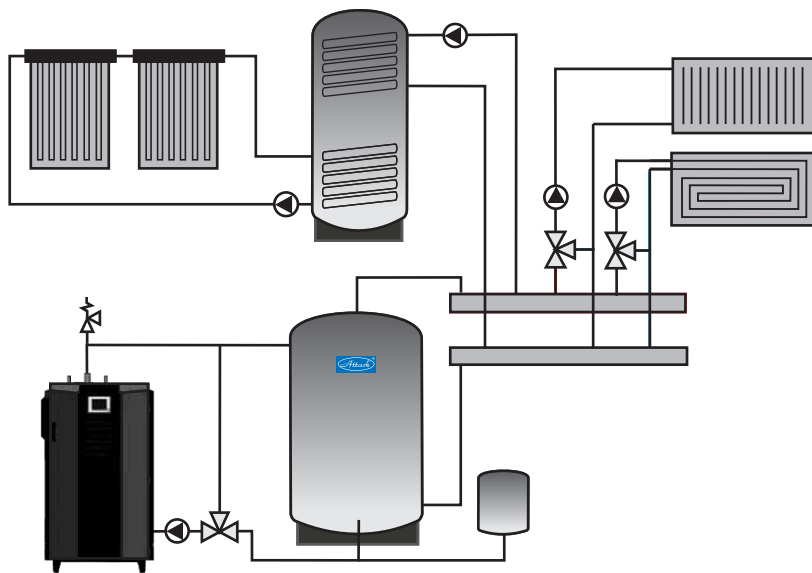


## 8. ATTACK AS

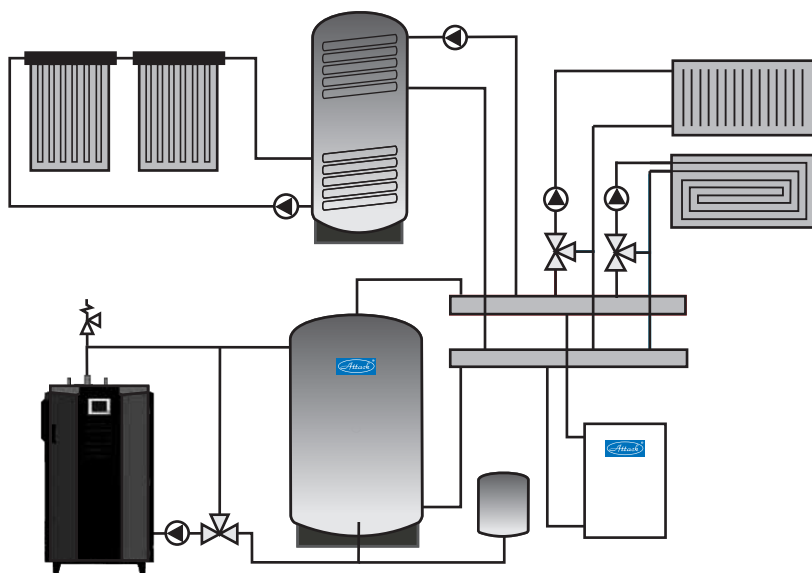




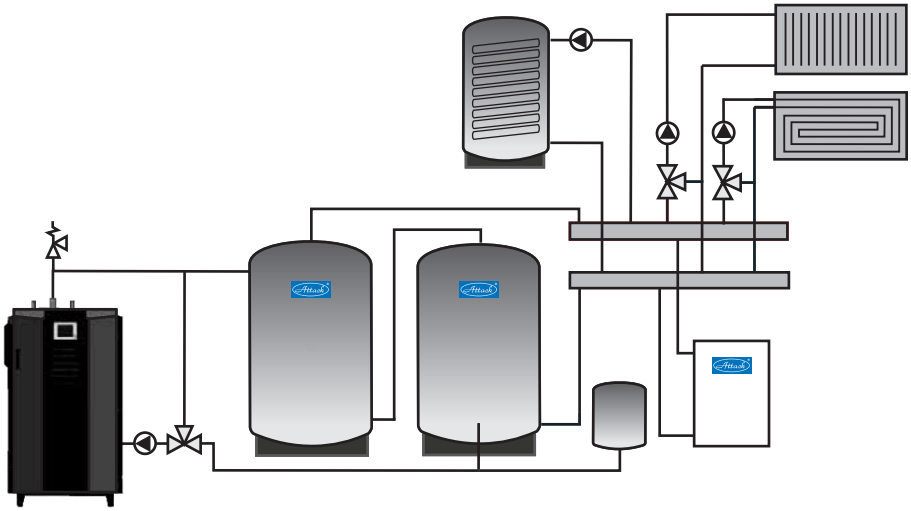
## 9. ATTACK AK BIVALENT



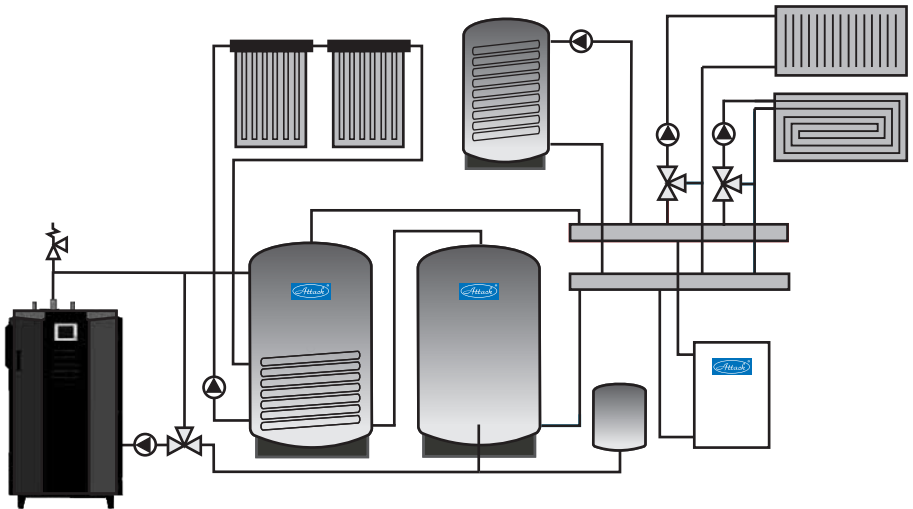
## 10. ATTACK AK BIVALENT



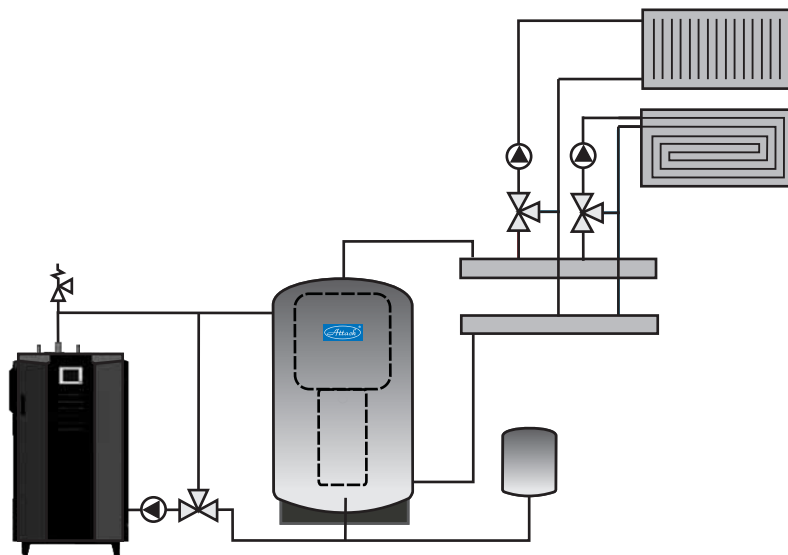
## 11. ATTACK AK 2x



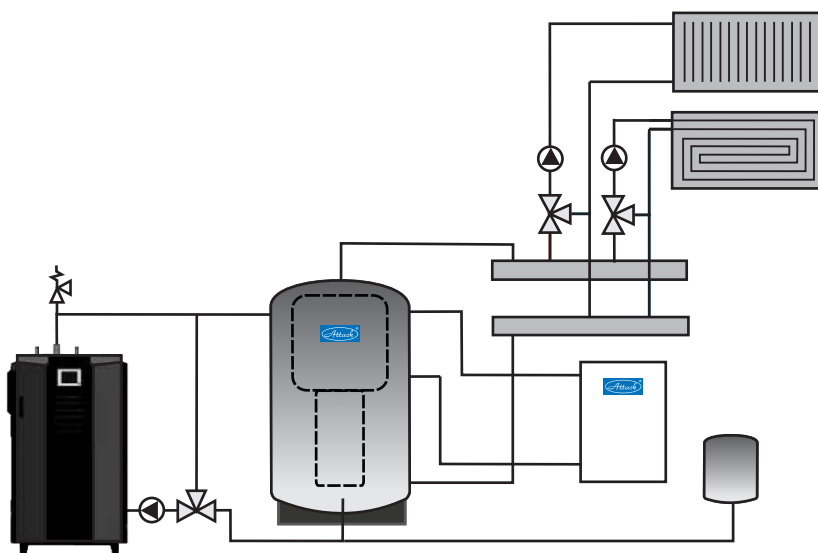
## 12. ATTACK AK 2x



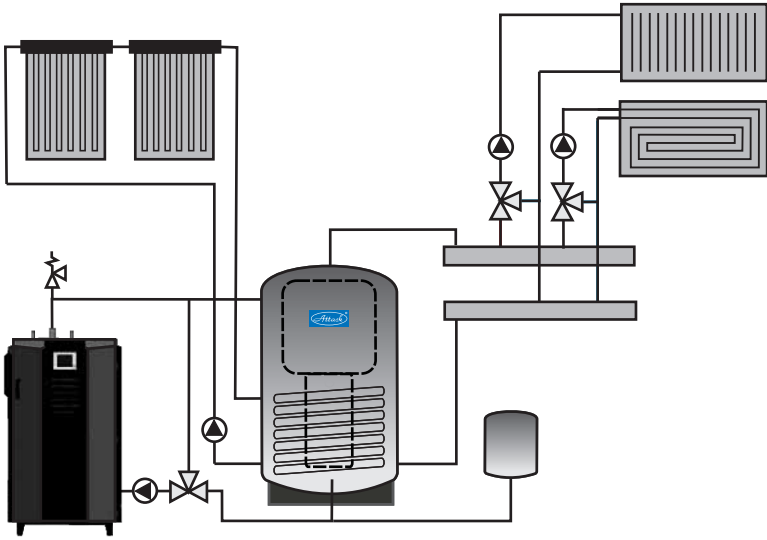
### 13. ATTACK HR



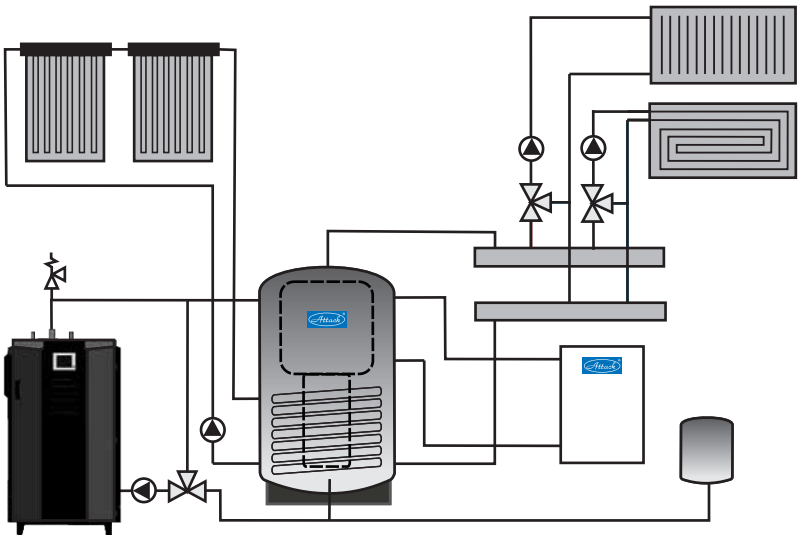
### 14. ATTACK HR



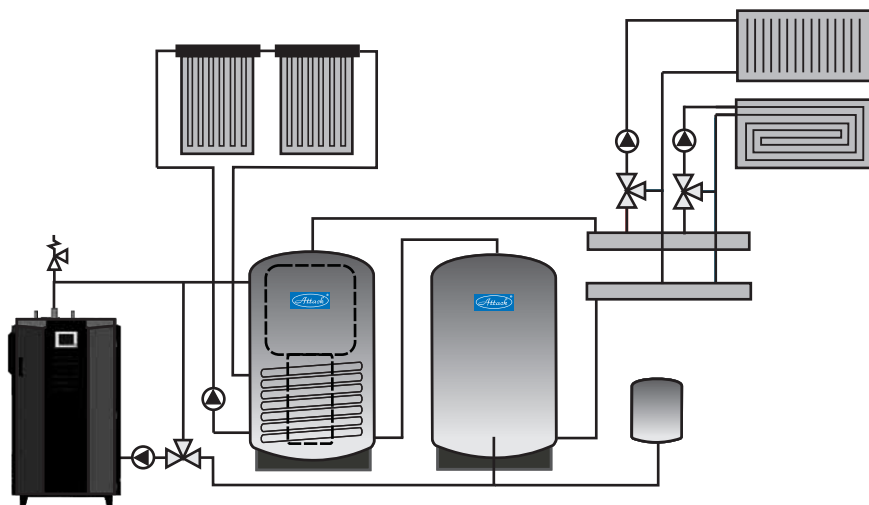
## 15. ATTACK HRS



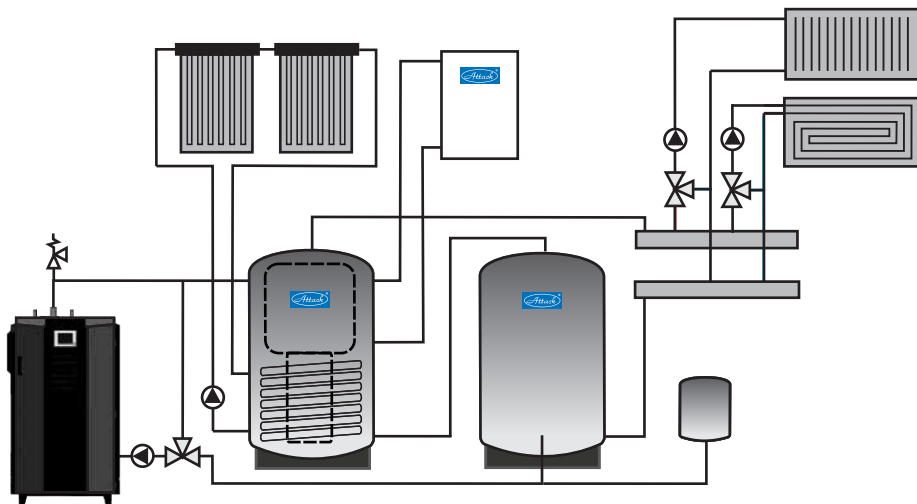
## 16. ATTACK HRS



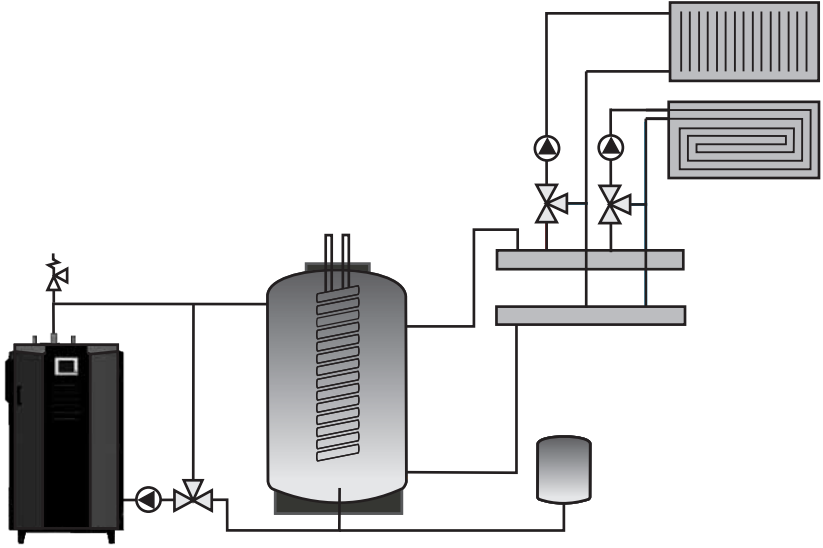
## 17. ATTACK HRS + ATTACK AK



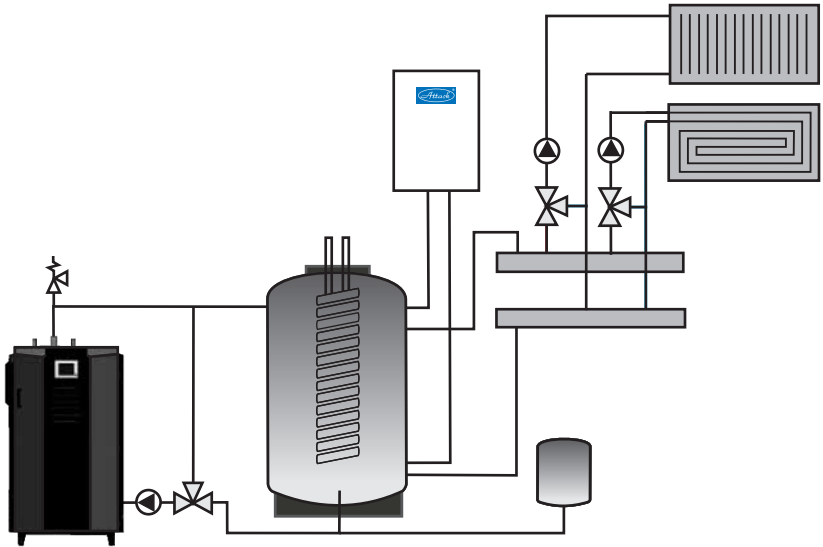
## 18. ATTACK HRS + ATTACK AK



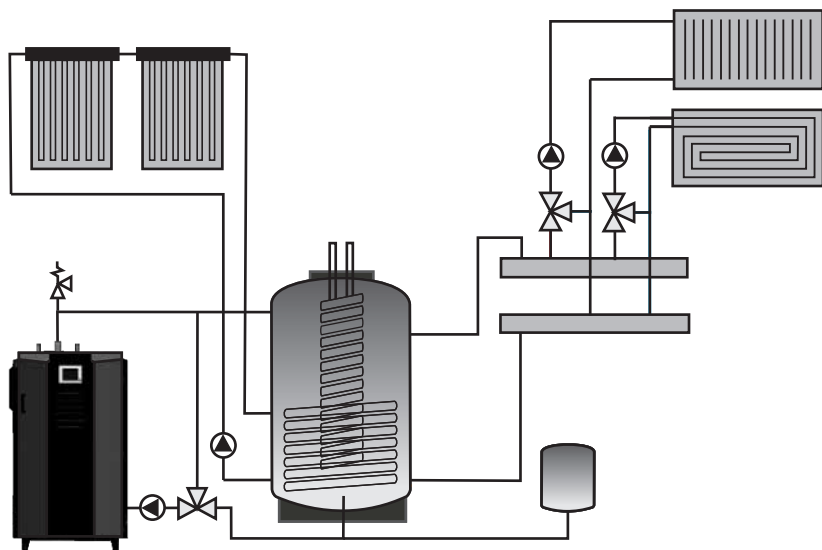
## 19. ATTACK TUV



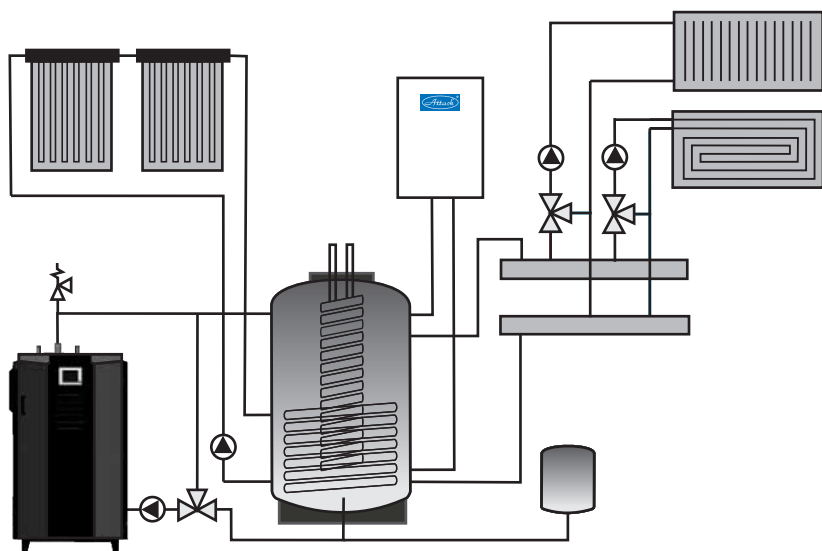
## 20. ATTACK TUV



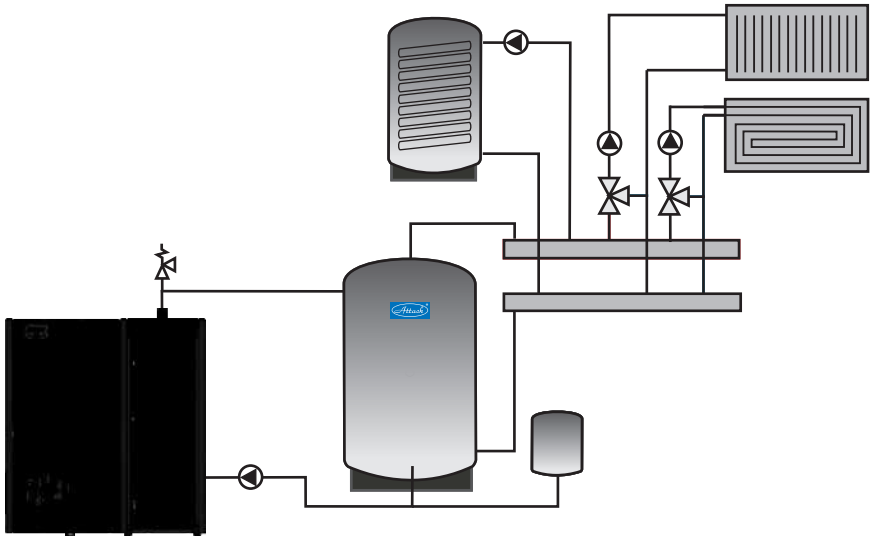
## 21. ATTACK TUVS



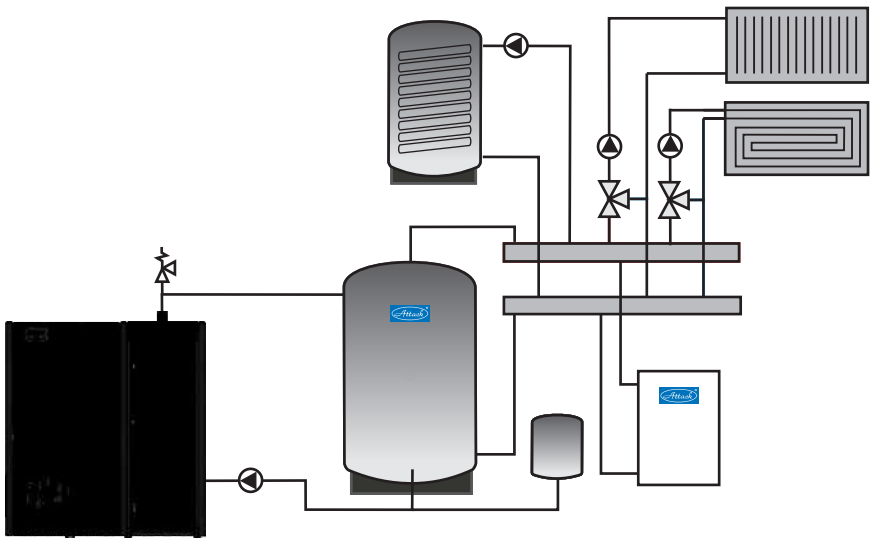
## 22. ATTACK TUVS



### 23. ATTACK FD Automat + ATTACK AK

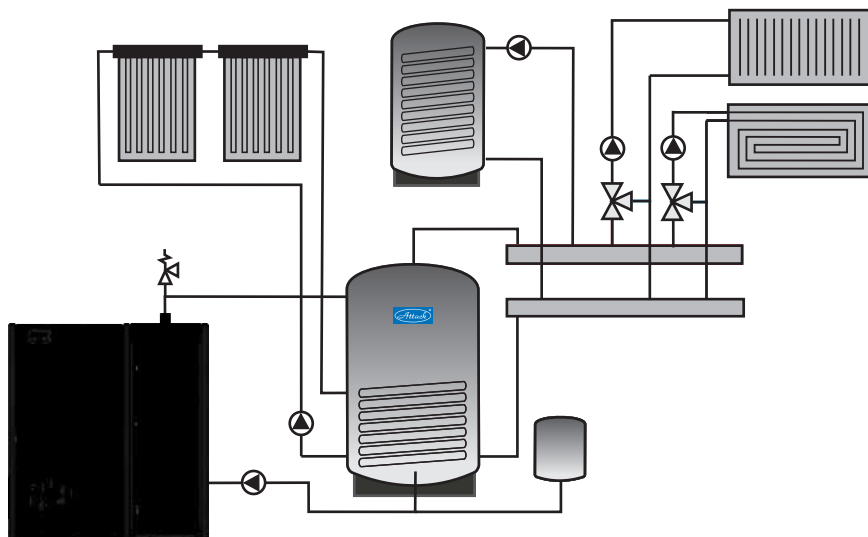


### 24. ATTACK FD Automat + ATTACK AK

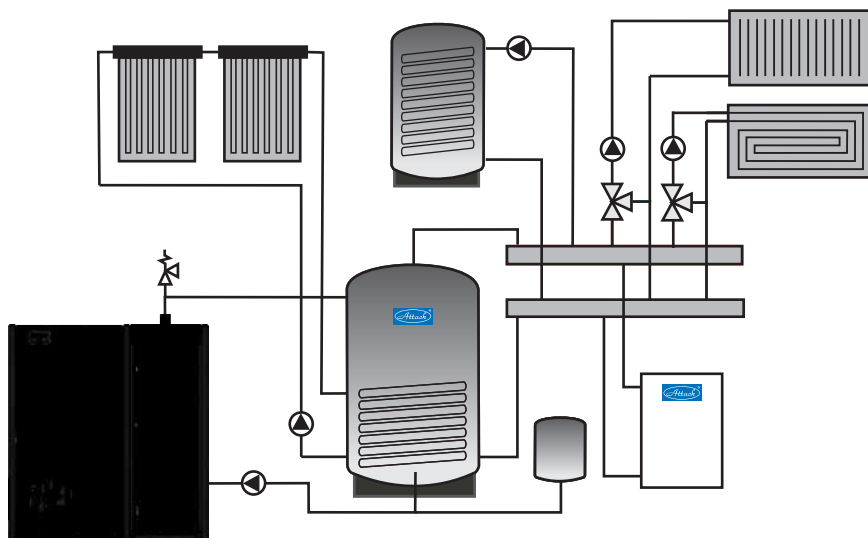




## 25. ATTACK FD Automat + ATTACK AS

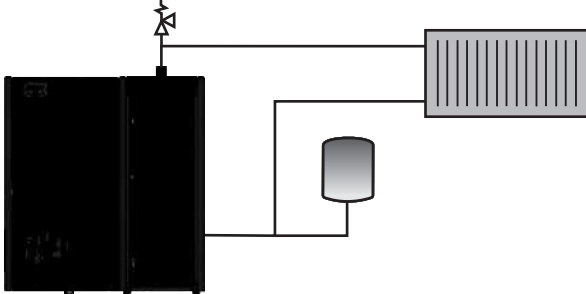


## 26. ATTACK FD Automat + ATTACK AS



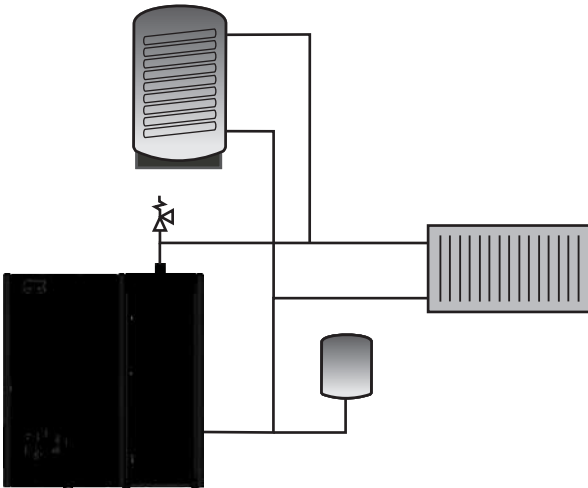
---

## 27. ATTACK FD Automat

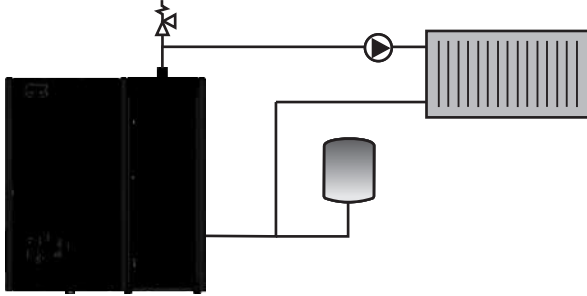


---

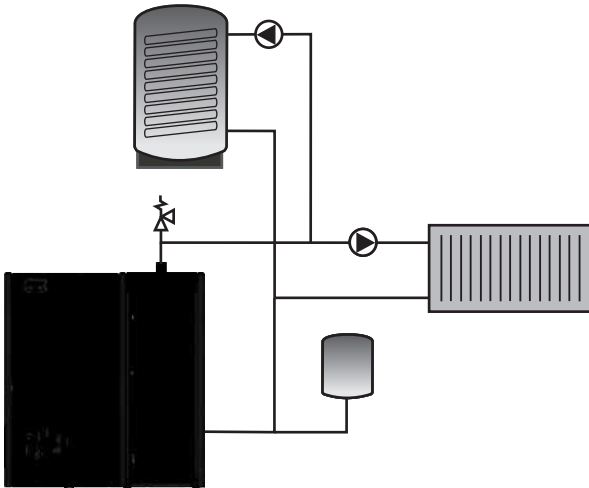
## 28. ATTACK FD Automat



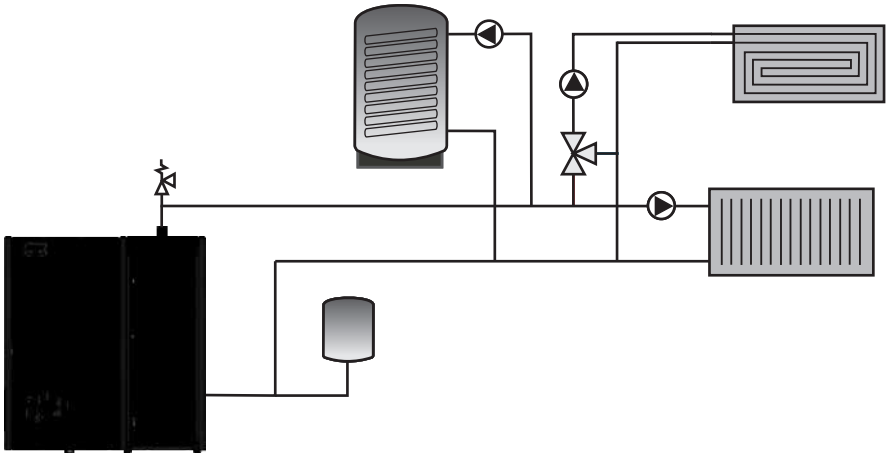
## 29. ATTACK FD Automat



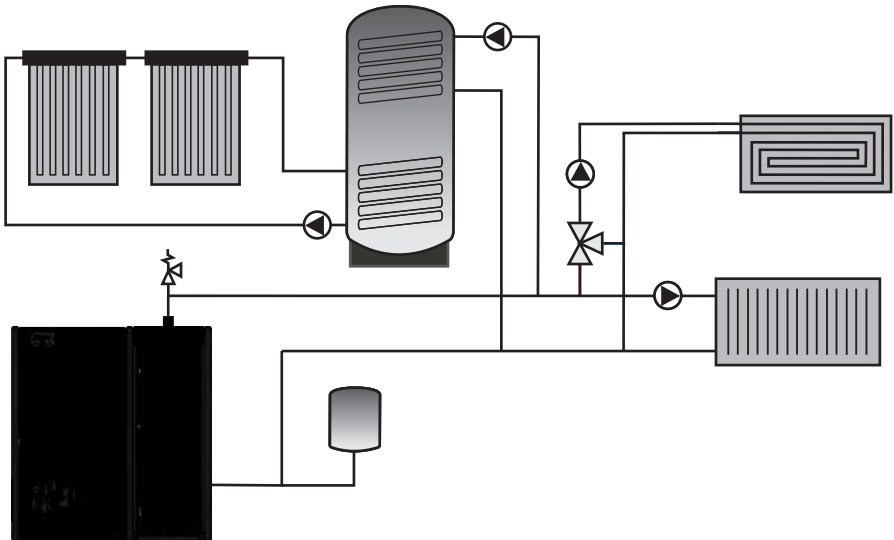
## 30. ATTACK FD Automat



## 31. ATTACK FD Automat

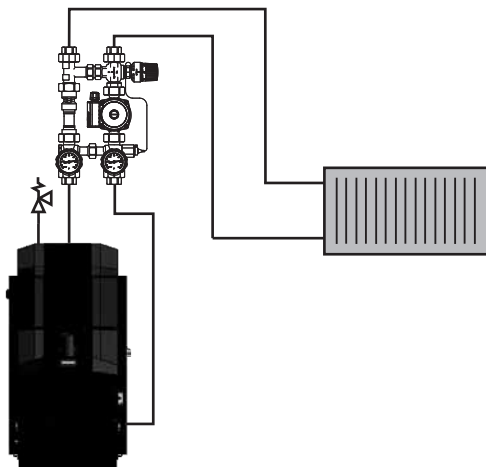


## 32. ATTACK FD Automat



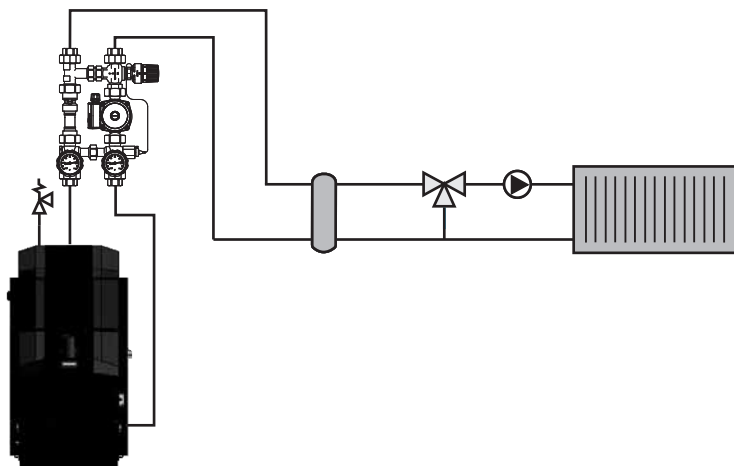
---

### 33. ATTACK PELLET 30 AUTOMATIC Plus

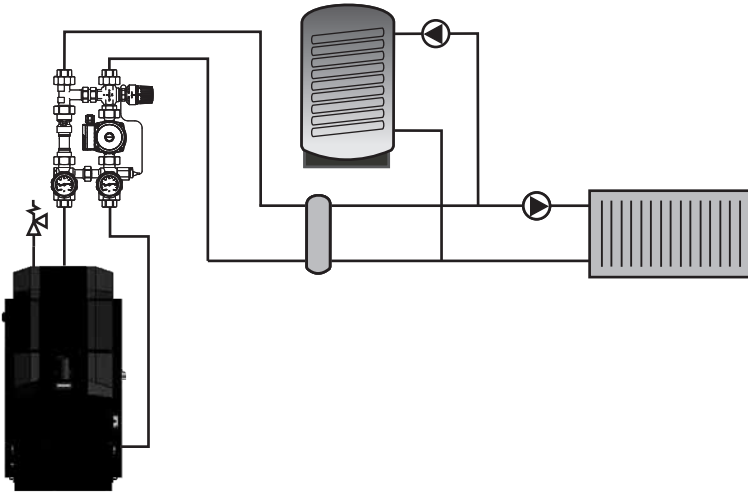


---

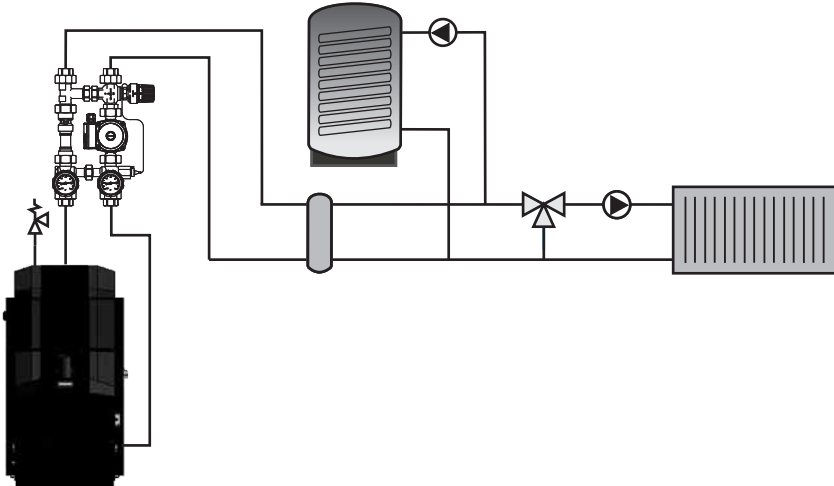
### 34. ATTACK PELLET 30 AUTOMATIC Plus



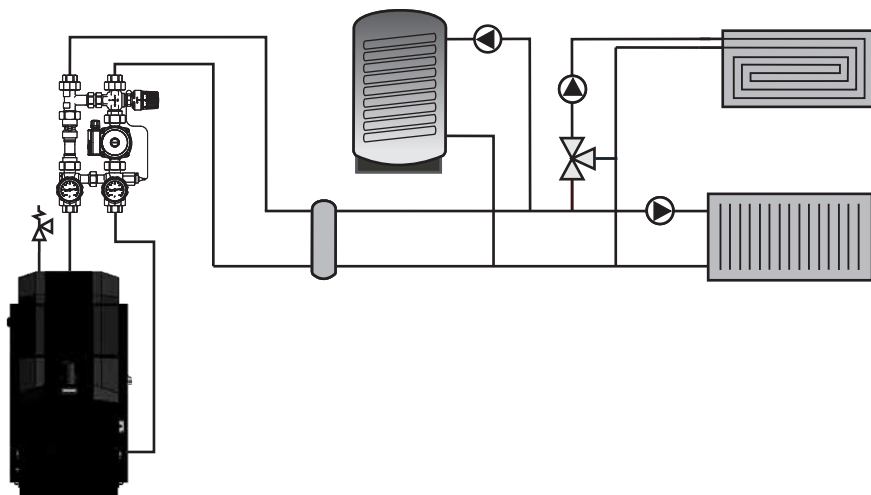
### 35. ATTACK PELLELET 30 AUTOMATIC Plus



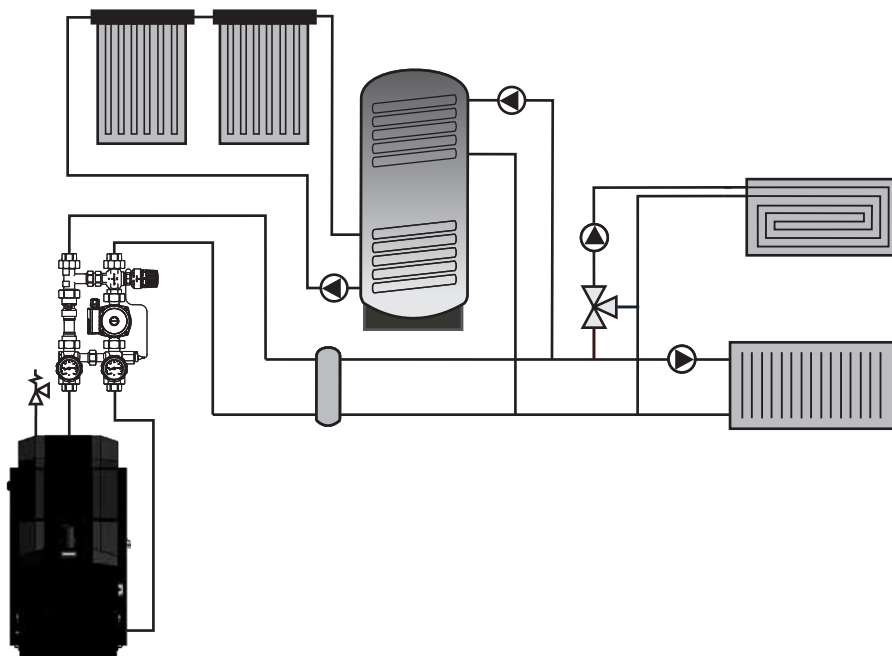
### 36. ATTACK PELLELET 30 AUTOMATIC Plus



### 37. ATTACK PELLET 30 AUTOMATIC Plus



### 38. ATTACK PELLET 30 AUTOMATIC Plus





---

ATTACK, s.r.o.  
Dielenská Kružná 5020  
038 61 Vrútky  
Slovenská republika

Tel: +421 43 4003 101  
Fax: +421 43 4003 106  
E-mail: [kotle@attack.sk](mailto:kotle@attack.sk)  
Web: [www.attack.sk](http://www.attack.sk)

---



---

Výrobca ATTACK, s.r.o. si vyhradzuje právo technických zmien výrobkov bez predchádzajúceho upozornenia. • ATTACK, s.r.o. producer reserves the right to change technical parameters and dimensions of boilers without previous warning. • Der Hersteller ATTACK, s.r.o. behält sich das Recht der technischen Veränderungen an Produkten ohne eine vorige Warnung. • Изготовитель ATTACK, s.r.o. оставляет за собой право изменения технических параметров и размеров котла без предыдущего предупреждения. • Le producteur ATTACK, s.r.o. réserve le droit des modifications techniques sans l'avertissement précédent. • Productor ATTACK, s.r.o. reserva el derecho de cambios técnicos sin advertencia anterior.

---

